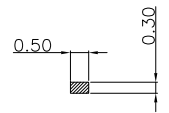
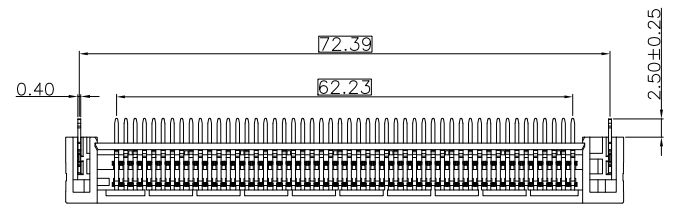
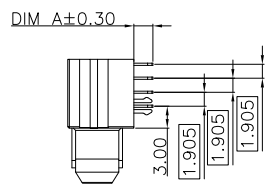
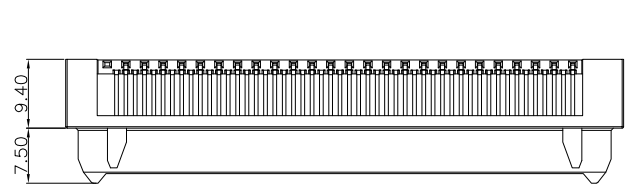
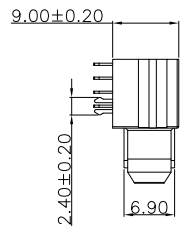
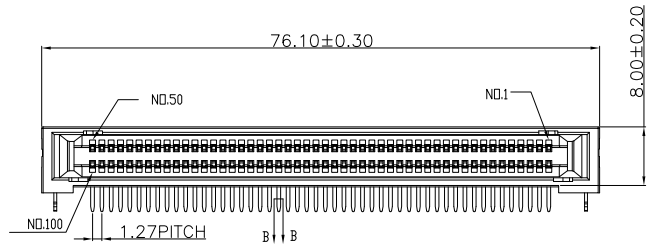
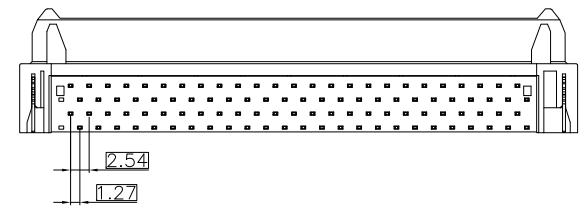


RoHS GP HF

REV.	ECN MARK	ECN NO.	DESCRIPTION	DRAWN	DATE
B		/	UPDATE DRAWING	Li Song	2022/08/09
C		/	UPDATE DRAWING	Li Song	2022/08/19

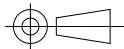


SECTION B-B  
SCALE 5:1



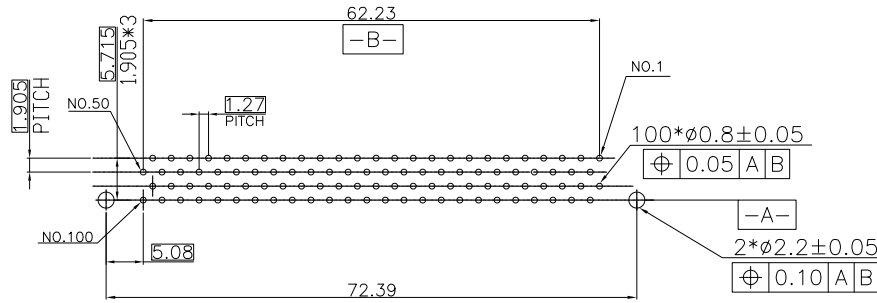
NOTES:

- 1.MATERIAL SPECIFICATION:
  - 1-1.HOUSING:HIGH TEMP THERMOPLASTIC UL94-V0 V2 OR HB; COLOR:BLACK
  - 1-2.SPACE:HIGH TEMP THERMOPLASTIC UL94-V0 V2 OR HB; COLOR:BLACK
  - 1-2.CONTACT:COPPER ALLOY;
  - 1-3.HOOK:STEEL ALLOY OR STAINLESS STEEL OR COPPER ALLOY;
- 2.PLATING SPECIFICATION:
  - 2-1.CONTACT:
    - 50U NICKEL UNDERPLATED;
    - GOLD PLATING ON CONTACT AREA;
    - 100U MATTE TIN PLATING ON SOLDER AREA;
  - 2-2.HOOK
    - ONLY NICKEL PLATING;
    - OR NO PLATING;
    - OR 50U MIN NICKEL UNDERPLATED,100UMIN MATTE TIN;
- 3.MECHANICAL PERFORMANCE:
  - 3-1.DURABILITY:500 CYCLES MIN;
- 4.ENVIRONMENT PERFORMANCE:
  - 4-1.OPERATING TEMPERATURE:-40°C TO +85°C;
- 4.ELECTRICAL PERFORMANCE:
  - 4-1.CURRENT RATING:1.0 AMP PER PIN;
  - 4-2.LLCR:40mΩ MAX(INITIAL);
  - 4-3.INSULATION RESISTANCE:100MΩ MIN;
  - 4-4.DIELECTRIC WITHSTAND VOLTAGE:AC 500V FOR 1 MINUTE;
- 5.ROHS COMPLIANT.
- 6.WAVE SOLDERING PROCESS
  - 6-1.RECOMMENDED CONDITION FOR WAVE SOLDERING: 220±5°C AND IMMERSION DURATION 10±2 SECONDS,

TOLERANCE X.X ±0.35 X.XX ±0.25 X.XXX ±0.10 ANGLE ±2.0°	MODEL NAME: OPS 100PIN FEMALE TYPE			DRAWN:	Li Song
	MODEL NO: WLPS-031A			CHECKED:	Youhua Cai
	UNIT:	SCALE:	REVISION:	SHEET:	APPROVED:
	mm	1:1	C	1/2	DATE: 2022/08/19
 <b>WLCO</b> 深圳市兴万联电子有限公司 SHENZHEN XING WAN LIAN ELECTRONICS CO., LTD.	DWG NO: C-WLPS-031A-01			FILE:	C

RoHS GP HF

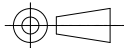
REV.	ECN MARK	ECN NO.	DESCRIPTION	DRAWN	DATE
B		/	UPDATE DRAWING	Li Song	2022/08/09
C		/	UPDATE DRAWING	Li Song	2022/08/19



RECOMMENDED PCB LAYOUT  
 DEFAULT TOLERANCE ±0.05

### TABLE

NO.	PART NO.	SPECIFICATION	HSF COMPLIANT	DIM"A"
1	WLPS-031A	HOUSING_PBT BLACK UL94-V0,SPACE PA9T BLACK,C5191 Au3u Min Ni50u,HOOK_COPPER ALLOY MATTE TIN PLATING.	RDHS COMPLIANT	2.60mm

TOLERANCE X.X ±0.35 X.XX ±0.25 X.XXX ±0.10 ANGLE ±2.0°	MODEL NAME:	OPS 100PIN FEMALE TYPE			DRAWN:	Li Song
	MODEL NO:	WLPS-031A			CHECKED:	Youhua Cai
	UNIT:	SCALE:	REVISION:	SHEET:	APPROVED:	Youhua Cai
	mm	1:1	C	2/2	DATE:	2022/08/19
 <b>WULCO</b> 深圳市兴万联电子有限公司 SHENZHEN XING WAN LIAN ELECTRONICS CO., LTD.				DWG NO:	C-WLPS-031A-01	
				FILE:	C	